

## Modular Cooking Range Line EVO700 Electric Induction Wok HP

ITEM # \_\_\_\_\_

MODEL # \_\_\_\_\_

NAME # \_\_\_\_\_

SIS # \_\_\_\_\_

AIA # \_\_\_\_\_



372282 (Z7INEDW00P)

Electric single induction wok -  
HP (5 kW)

### Short Form Specification

Item No. \_\_\_\_\_

6 mm thick glass ceramic Wok bowl with 5 kW surface power. Exterior panels in stainless steel with Scotch Brite finish. One piece pressed work top in 1.5 mm thick stainless steel. Right-angled side edges to allow flush-fitting junction between units.

### Main Features

- 6mm glass-ceramic cooking surface with a total power of 5 kW.
- Indicating lamp for operating zone located on control console.
- Induction plate endowed with overheating safety device.
- Power to the zone can be set with progressive output i.e. fine regulation at the lower levels and larger progress at the upper levels.
- Low heat dissipation to the kitchen.
- The smooth, glass ceramic plate is not directly heated, so there is no burning on cooking surface.
- Automatic pan detection to transfer power only when pan is present.
- IPx4 water protection.
- Pots diameter to be used : min 12cm, max 28 cm in order to obtain maximum heating efficiency.
- Suitable for countertop installation.

### Construction

- All exterior panels in Stainless Steel with Scotch Brite finishing.
- One piece pressed 1.5 mm work top in Stainless steel.
- Model has right-angled side edges to allow flush fitting joints between units, eliminating gaps and possible dirt traps.

### Sustainability

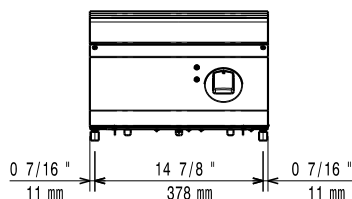
- This model is compliant with Swiss Energy Efficiency Ordinance (730.02).

APPROVAL: \_\_\_\_\_

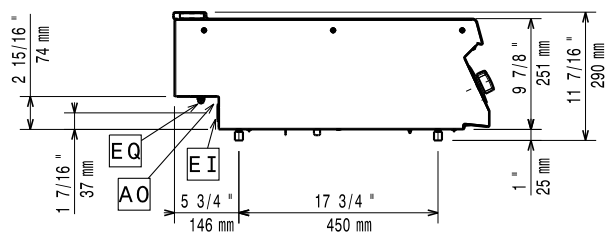
## Optional Accessories

- Support for bridge type installation, 800 mm PNC 206137 ☐
- Support for bridge type installation, 1000 mm PNC 206138 ☐
- Support for bridge type installation, 1200 mm PNC 206139 ☐
- Support for bridge type installation, 1400 mm PNC 206140 ☐
- Support for bridge type installation, 1600 mm PNC 206141 ☐
- Support for bridge type installation, 400 mm PNC 206154 ☐
- Water column extension PNC 206291 ☐
- Chimney upstand, 400 mm PNC 206303 ☐
- 2 side covering panels, height 250 mm, depth 700 mm PNC 206320 ☐
- Base support for feet or wheels - 800mm (EVO700/900) PNC 206367 ☐
- Induction Wok pan with wooden handle (diam. 360mm) PNC 910613 ☐
- Stainless steel wok pan, design in line with wok cuvette PNC 911000 ☐
- Non-stick wok pan, design in line with wok cuvette PNC 911003 ☐
- Induction Wok pan with stainless steel handle (diam. 360mm) PNC 911587 ☐
- Stainless steel lid for wok pan, diameter 360 mm PNC 911588 ☐

### Front



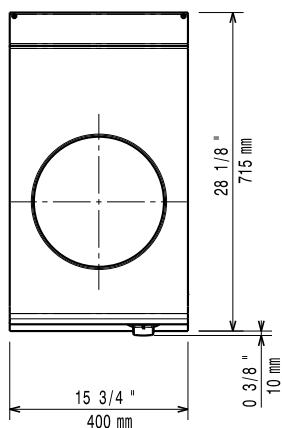
### Side



EI = Electrical inlet (power)

EQ = Equipotential screw

### Top



### Electric

Supply voltage: 380-400 V/3 ph/50/60 Hz

380-400V 3~ 50/60Hz

Predisposed for: 4.5-5kW

Total Watts: 5 kW

### Key Information:

If appliance is set up or next to or against temperature sensitive furniture or similar, a safety gap of approximately 150 mm should be maintained or some form of heat insulation fitted.

Induction compatible pots & pans must be used.

**External dimensions, Width:** 400 mm

**External dimensions, Depth:** 700 mm

**External dimensions, Height:** 250 mm

**Net weight:** 20 kg

**Shipping weight:** 27 kg

**Shipping height:** 540 mm

**Shipping width:** 460 mm

**Shipping depth:** 820 mm

**Shipping volume:** 0.2 m<sup>3</sup>

**Certification group:** N7CIN

**Back Plates Power:** 5 - kW

**Back Plates dimensions:** Ø 300